



Quick Start

Thank you for downloading my software!

Do not let the simplicity fool you as the Tube Frame Tamer will make your life easier every time you need a customized video player.

Be sure to try out the example / test projects I have provided. They will most likely be all you need to learn how powerful this software is.

Let's get started!

Open the software:

TubeFrameTamer.bgr	1/13/2014 6:28 AM	BGR File	235 KB
TubeFrameTamer.bin	1/13/2014 6:28 AM	BIN File	6 KB
TubeFrameTamer.exe	1/13/2014 6:27 AM	Application	2,627 KB
TubeFrameTamer.ini	1/13/2014 6:28 AM	Configuration Se...	1 KB
TubeFrameTamer.lib	1/13/2014 6:28 AM	LIB File	1 KB

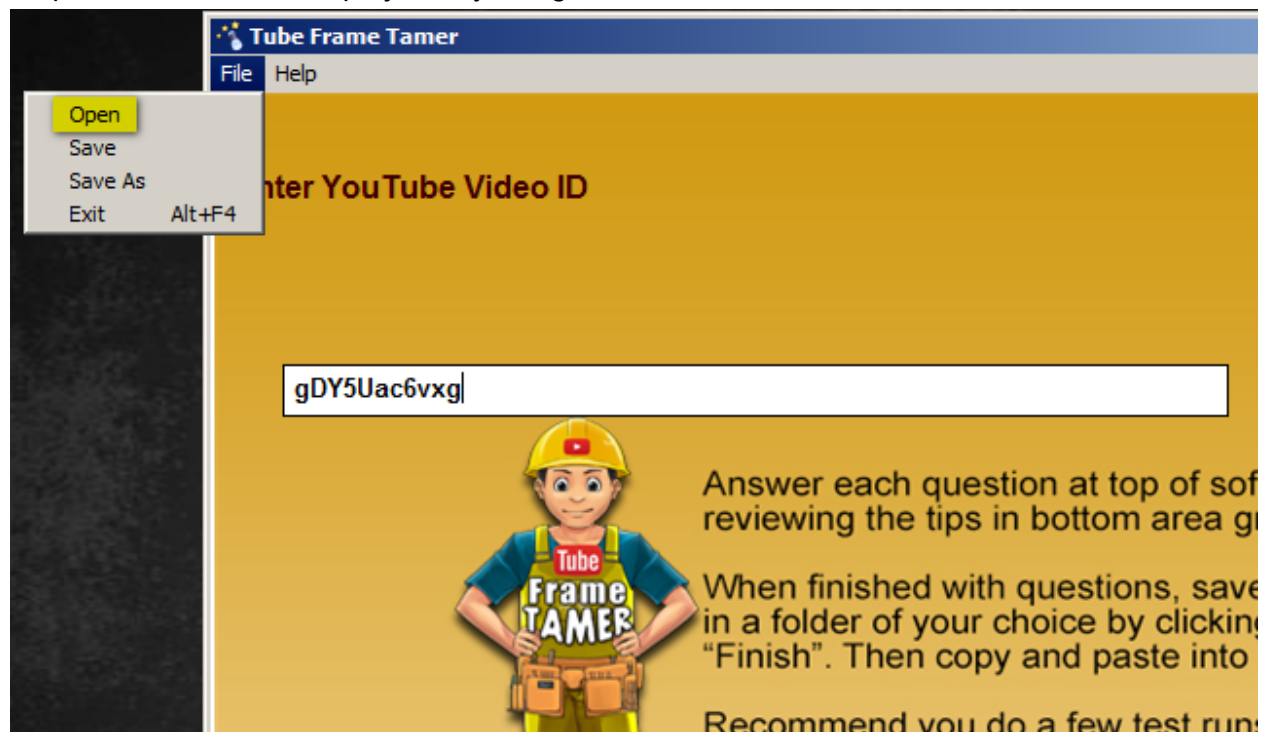
Click the .exe File To Start

You will then see:



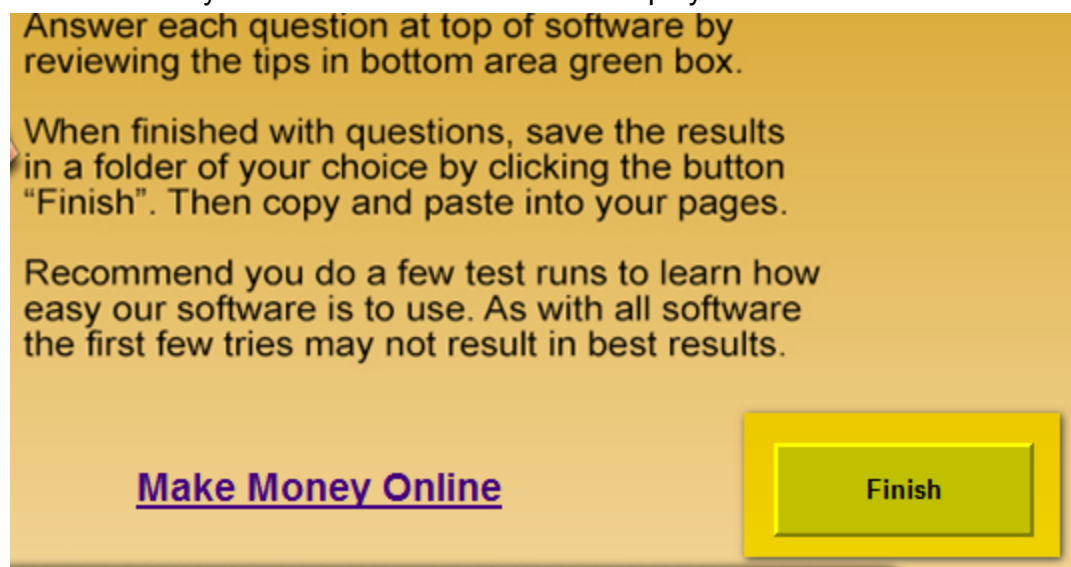
The top field is where you enter the answer asked. The bottom green are of software gives you the tips needed to complete the answers.

Again and I cannot stress this enough, use the the provided test project files to make it dead drop simple. You can load the projects by using the file menu like this:

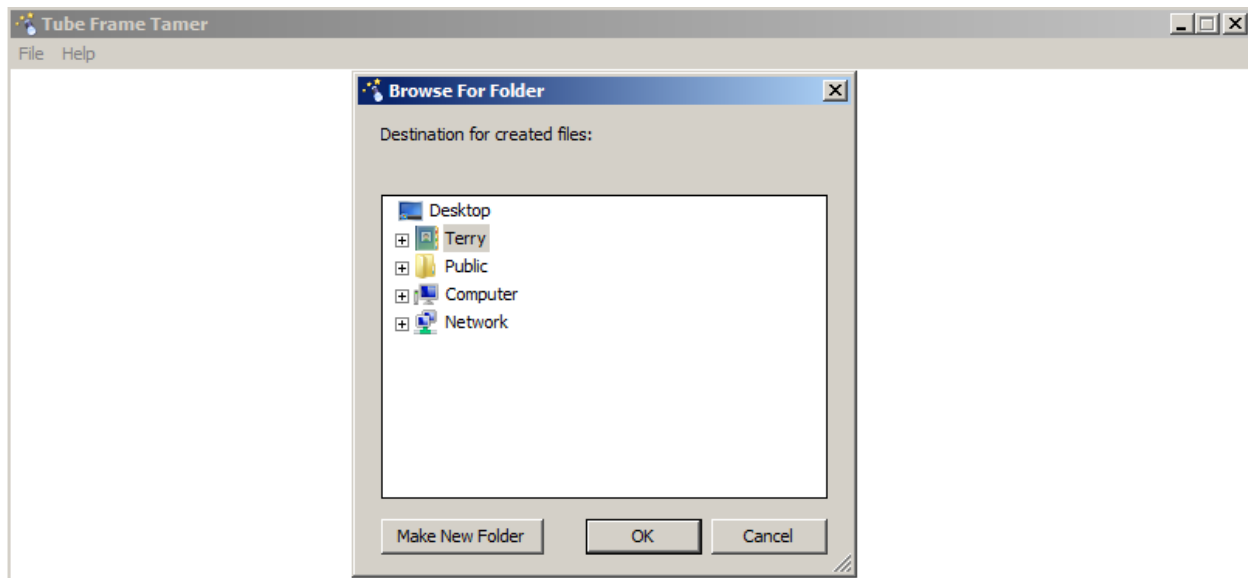


Navigate to the folders with the example / test projects and load one. Step through each question and pay attention to the answers / content.

Once you have completed the questions, you will arrive at the last screen, click the "Finish" button to save your new custom YouTube video player:



You will then be asked where you wish to save the code for the new custom video player:



Once you have chosen the location and clicked “OK”, the folder will automatically open with your custom code. You will a HTML file and text version with the iframe code. You can also copy the code directly from the software:

